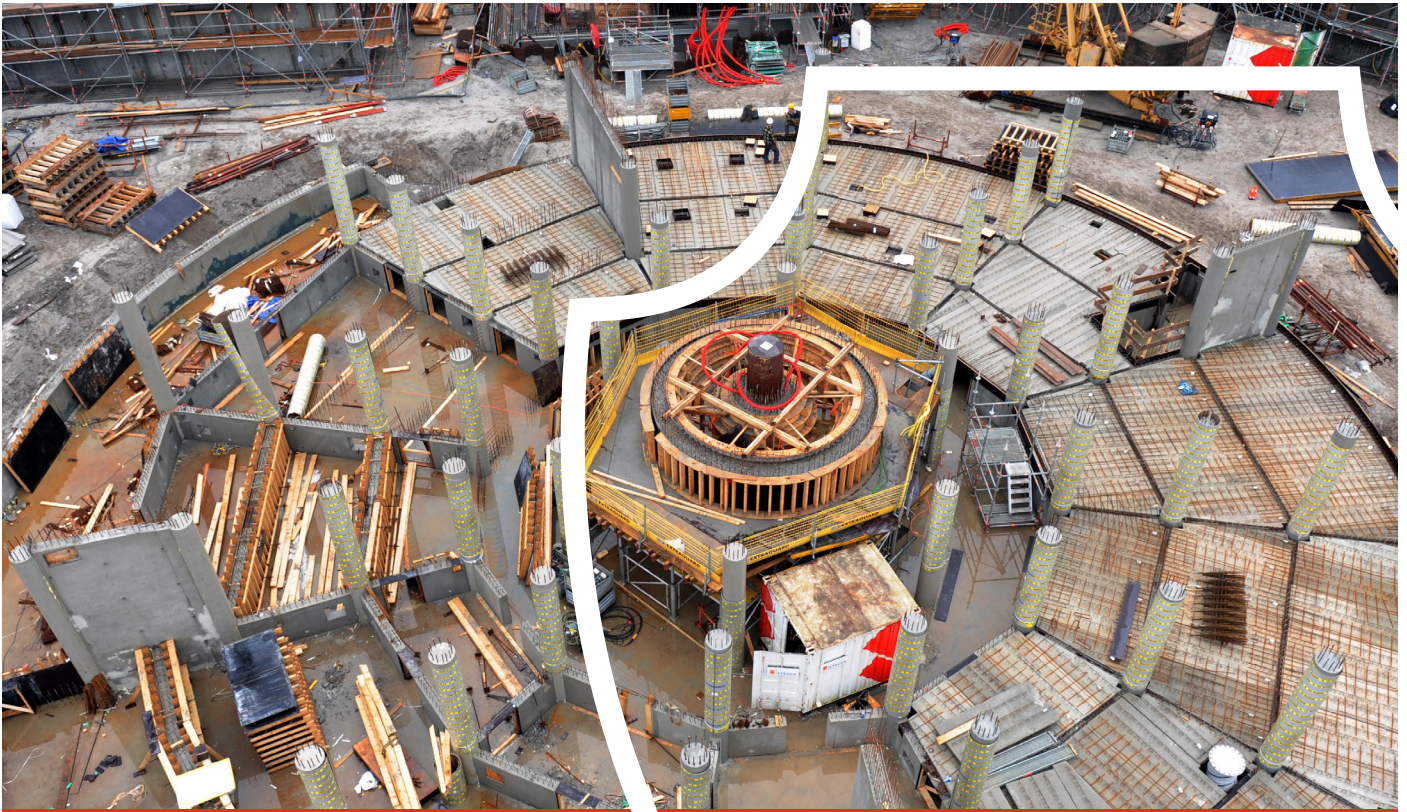


Formwork for Columns in Construction



Monotub DD

Formwork for circular columns
in construction

Rapid construction

The Monotub DD improves the speed of construction as erecting, pouring and removing of formwork can be done quickly.

Reduce costs

As delivery for all columns can happen at once, this reduces concrete costs.

Simple and lightweight

Monotub DD can be easily erected by one worker without the use of cranes.

Sustainable

Manufactured from recycled waterproof carton, the product is 100% water-resistant and is built to withstand diverse weather conditions.

MONOTUB DD

Formwork for circular columns in construction

The Monotub DD can be specified to your construction needs. Offering column protection, providing concrete curing.

Easily positioned, removed and light-weight. Monotub can be stored outside due to its weather resistant construction; this all-weather approach provides maximum flexibility on-site as it is not necessary to pour the concrete immediately after constructing the tubes. For optimum results it is advised to condense the concrete after every 50cm.

Features and Benefits

■ Monotub DD Speed

An equal smooth column form which can be removed very quickly by pulling down the steel line that is the tube and functions as a 'zipper'. The inner foil (PVC) creates a slow maturing of the concrete, which benefits the strength of the concrete.

■ Monotub DD Spiral

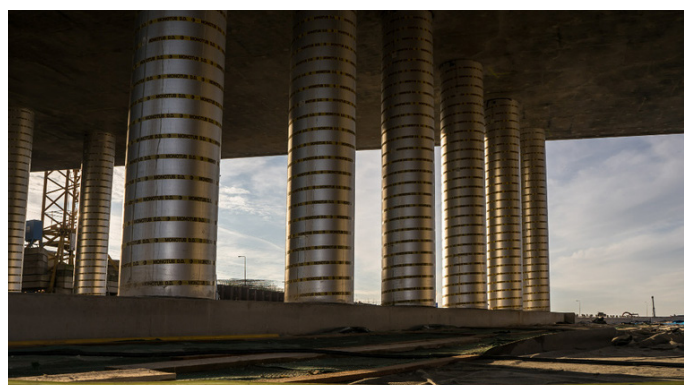
The Spiral is suitable for dirty work, concrete assessment class 1 C. After the formwork has been removed, a spiral drawing will remain visible in the concrete surface. This formwork can also be made with a zipper.

■ Monotub DD Square/Rectangle

The form consists of the standard circular tube that is assembled with polystyrene parts. The product is finished on the inside with a hard inner plate. The square/rectangular version is suitable for concrete assessment class 1A/CUR 100. The tube is produced without a zipper as standard, as the tube can easily be cut open (with a knife or a grinder) on the polystyrene part without damaging the concrete surface.

■ Monotub DD Basic

The Basic is for infilling, often shorter pouring tubes. The tube is slid over the concrete pile head and poured concrete. The pouring tube can easily be cut back to any length on site. The tube can also be delivered to the construction site in any desired length from the factory.



Technical Specifications

Monotub DD Type	Diameter Range Available (mm)
Speed	152 to 1200
Spiral	152 to 1200
Square/Rectangle	200 to 700
Basic	152 to 1200

MONOTUB DD

Formwork for circular column
in construction



Technical Specifications

Diameter (mm)	Concrete in dm per mtr Column	Surface Quality class of Concrete	Wall Thickness (mm)	Weight (Kg) per mtr of Tube
152	18.1	1A	2.5	1.3
202	32	1A	2.5	1.7
250	49.1	1A	2.9	2.1
300	70.6	1A	2.9	2.5
350	96.2	1A	3.3	3.6
400	125.6	1A	3.7	4.1
450	159	1A	3.7	4.6
500	196.3	1A	4.1	5.1
550	237.6	1A	4.1	6.3
600	282.7	1A	4.5	6.9
650	333.8	1A	4.5	7.5
700	384.8	1A	4.5	8.0
750	449.5	1A	4.9	7.5
800	515.3	1A	4.9	9.3
850	582.85	1A	4.9	9.5
900	650.4	1A	4.9	10.5
1000	785.4	1A	5.3	11.5
1100	958.2	1A	5.3	12.5
1200	1131	1 C	5.3	13.7

Monotub DD Accessories

Additionally available are accessories for Monotub DD, in order to complete the product the yokes for fixing and erecting can be provided. The bottom yoke is made out of recycled board and fits perfectly on the outside of the tubes, this product can be reused several times. Additional accessories include foot braces delivered in two parts for easy construction at the bottom of the tubes. The multistrap for adjusting and stabilising the column framework from the top can also be provided. The multistrap is a nylon strap which is attached to the column formwork supporting stability.