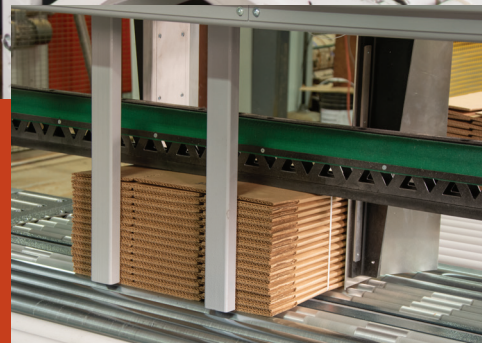


SIG-VCS



SIG-VCS

Automatic squaring bundler

High-speed Bundling

Up to 32 bundles per minute to maximize production capacity

Lowest Cost of Ownership

Robust machine design coupled with low maintenance simplicity to minimize costs

Operator-friendly

Intuitive icon-driven controls enable fast bundle set-up

Maximum Uptime

XL coils, quick-change dispensers, auto-bundle teach and auto-refeed technology minimize downtime for continuous strapping



SIG-VCS

Automatic squaring bundler



The SIG-VCS automatic squaring bundler provides high speed bundling capabilities. The VCS comes complete with a range of features to ensure continuous strapping and maximum uptime.

Features and benefits

■ Minimizes production interruptions

The SIG-VCS has standard built-in features to keep production downtime to a minimum. Set-up time can be performed in under a minute or faster with the auto-bundle teach option. Extra long strap coils with nearly 42% more strap coupled with quick-change dispensers reduce coil changeover frequency and downtime.

■ Simplifies maintenance requirements

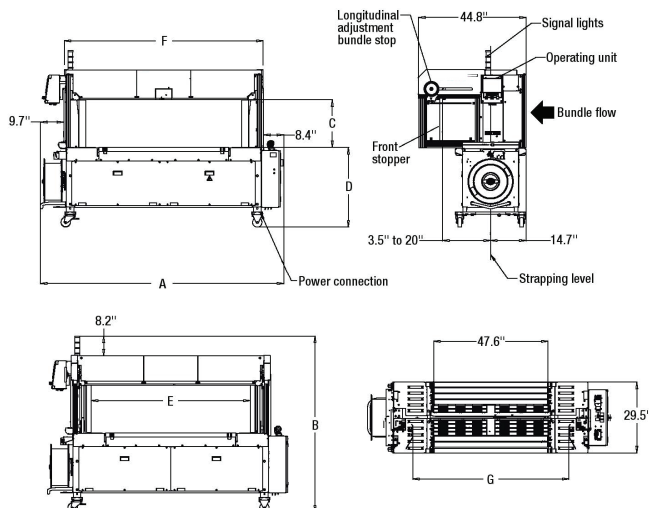
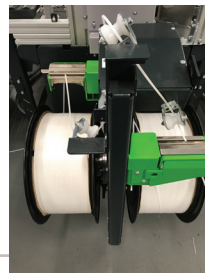
For easy troubleshooting, the SIG-VCS is equipped with patented easy access strap guides that require no tools for entry. Plus, a segmented strap chute with a lifetime warranty on the flaps and one wear part eliminate costly repairs and maintenance downtime. Service interval notifications alert operators to scheduled machine maintenance recommendations.

■ Provides production versatility

The SIG-VCS can accommodate production changes quickly and easily. Integrated features for low-tension packages like a low-tension setting and strap ejector help ensure maximum package reliability despite changing production needs.

SIG-VCS options

- Automatic bundle stops
- Auto-bundle teach
- Spare magnetic strap dispenser
- Spare parts kit
- Industrial interlock kit
- High leg kit (40" to 49")
- Low leg kit (25.2" to 31")
- Dual coils with automatic strap change



SIG-VCS Technical Specifications

| | |
|------------------------------|---|
| Cycle Rate Per Minute* (Max) | Up to 32 bundles without squaring Up to 25 bundles with squaring |
| Conveyor Speed | Variable from 0.19 m to 0.98 m (.65 to 3.2 ft/sec) |
| Strap Tension | Variable up to 311 N (70 lbs) |
| Strap Material | Polypropylene 5 mm embossed |
| Strap Seal Method | Heat seal |
| Electrical Requirement | 460 Volt, 16 AMP, 60 Hz |
| Environmental Condition | +5° to +45° Celsius (40° to 110° Fahrenheit) |

* Based on package size L 300 mm x W 250 mm x H 250 mm, conveyor speed 0,8 m/s, strap tensioning setting 3

Machine Dimensions

| | SIG-VCS 1650 | |
|-----------------------------------|------------------------------------|--------------------------------------|
| Frame Size W X H | 1650 mm x 600 mm (65" x 23") | |
| Part Number | x55004 | |
| Total Width Including Strap Coil | A | 2566 mm (101") |
| Total Height | B | 2032 mm to 2260 mm (80" to 89") |
| Inner Frame Height With Press Bar | C | 500.38 mm (19.7") |
| Tabletop Height | D | 787.4 mm to 1016 mm (31" to 40") |
| Front Stopper Distance | E | 152.4 mm to 1676.4 mm (6" to 66") |
| Arch Width | F | 2110.74 mm (83.1") |
| Squaring Plate Difference | G | 115 mm to 1650 mm (4.4" to 65") |
| Weight | 776 kg (1710 lbs) | |
| Bundle Width | 100 mm to 1650 mm (3.9" to 65") | |
| Bundle Height | 20 mm to 480 mm (0.8" to 18.9") | |
| Bundle Length | 150 mm 2500 mm (6" to 98.4") | |
| Bundle Weight (Max) | 50 kg (110 lbs) | |